

WSP 300 Series

Model no.	Max. space for ducting	Max. size wall opening
WSP 300	3.937" x 11.811"	5.906" x 13.780"
WSP 300/1	5.906" x 11.811"	7.874" x 13.780"
WSP 300/2	7.874" x 11.811"	9.843" x 13.780"
WSP 300/3	9.843" x 11.811"	11.811" x 13.780"
WSP 300/4	11.811" x 11.811"	13.780" x 13.780"
WSP 300/5	13.780" x 11.811"	15.748" x 13.780"
WSP 300/6	15.748" x 11.811"	17.717" x 13.780"
WSP 300/7	17.717" x 11.811"	19.685" x 13.780"
WSP 300/8	19.685" x 11.811"	21.654" x 13.780"

WSP 450 Series

Model no.	Max. space for ducting	Max. size wall opening
WSP 450	3.937" x 17.730"	5.906" x 19.710"
WSP 450/1	5.906" x 17.730"	7.874" x 19.710"
WSP 450/2	7.874" x 17.730"	9.843" x 19.710"
WSP 450/3	9.843" x 17.730"	11.811" x 19.710"
WSP 450/4	11.811" x 17.730"	13.780" x 19.710"
WSP 450/5	13.780" x 17.730"	15.748" x 19.710"
WSP 450/6	15.748" x 17.730"	17.717" x 19.710"
WSP 450/7	17.717" x 17.730"	19.685" x 19.710"
WSP 450/8	19.685" x 17.730"	21.654" x 19.710"

WSP 600 Series

Model no.	Max. space for ducting	Max. size wall opening
WSP 600	3.937" x 23.622"	5.906" x 25.591"
WSP 600/1	5.906" x 23.622"	7.874" x 25.591"
WSP 600/2	7.874" x 23.622"	9.843" x 25.591"
WSP 600/3	9.843" x 23.622"	11.811" x 25.591"
WSP 600/4	11.811" x 23.622"	13.780" x 25.591"
WSP 600/5	13.780" x 23.622"	15.748" x 25.591"
WSP 600/6	15.748" x 23.622"	17.717" x 25.591"
WSP 600/7	17.717" x 23.622"	19.685" x 25.591"
WSP 600/8	19.685" x 23.622"	21.654" x 25.591"

WSP 750 Series

Model no.	Max. space for ducting	Max. size wall opening
WSP 750	3.937" x 29.528"	5.906" x 31.496"
WSP 750/1	5.906" x 29.528"	7.874" x 31.496"
WSP 750/2	7.874" x 29.528"	9.843" x 31.496"
WSP 750/3	9.843" x 29.528"	11.811" x 31.496"
WSP 750/4	11.811" x 29.528"	13.780" x 31.496"
WSP 750/5	13.780" x 29.528"	15.748" x 31.496"
WSP 750/6	15.748" x 29.528"	17.717" x 31.496"
WSP 750/7	17.717" x 29.528"	19.685" x 31.496"
WSP 750/8	19.685" x 29.528"	21.654" x 31.496"

WSP 900 Series

Model no.	Max. space for ducting	Max. size wall opening
WSP 900	3.937" x 35.433"	5.906" x 37.402"
WSP 900/1	5.906" x 35.433"	7.874" x 37.402"
WSP 900/2	7.874" x 35.433"	9.843" x 37.402"
WSP 900/3	9.843" x 35.433"	11.811" x 37.402"

WSP 900 Series Trays

Model no.	Max. space for ducting	Max. size wall opening
WSP 900/4	11.811" x 35.433"	13.780" x 37.402"
WSP 900/5	13.780" x 35.433"	15.748" x 37.402"
WSP 900/6	15.748" x 35.433"	17.717" x 37.402"
WSP 900/7	17.717" x 35.433"	19.685" x 37.402"
WSP 900/8	19.685" x 35.433"	21.654" x 37.402"

WSP 1050 Series

Model no.	Max. space for ducting	Max. size wall opening
WSP 1050	3.937" x 41.399"	5.906" x 43.307"
WSP 1050/1	5.906" x 41.399"	7.874" x 43.307"
WSP 1050/2	7.874" x 41.399"	9.843" x 43.307"
WSP 1050/3	9.843" x 41.399"	11.811" x 43.307"
WSP 1050/4	11.811" x 41.399"	13.780" x 43.307"
WSP 1050/5	13.780" x 41.399"	15.748" x 43.307"
WSP 1050/6	15.748" x 41.399"	17.717" x 43.307"
WSP 1050/7	17.717" x 41.399"	19.685" x 43.307"
WSP 1050/8	19.685" x 41.399"	21.654" x 43.307"

WSP 1200 Series

Model no.	Max. space for ducting	Max. size wall opening
WSP 1200	3.937" x 47.244"	5.906" x 49.213"
WSP 1200/1	5.906" x 47.244"	7.874" x 49.213"
WSP 1200/2	7.874" x 47.244"	9.843" x 49.213"
WSP 1200/3	9.843" x 47.244"	11.811" x 49.213"
WSP 1200/4	11.811" x 47.244"	13.780" x 49.213"
WSP 1200/5	13.780" x 47.244"	15.748" x 49.213"
WSP 1200/6	15.748" x 47.244"	17.717" x 49.213"
WSP 1200/7	17.717" x 47.244"	19.685" x 49.213"
WSP 1200/8	19.685" x 47.244"	21.654" x 49.213"

WSP 1350 Series

Model no.	Max. space for ducting	Max. size wall opening
WSP 1350	3.937" x 53.150"	5.906" x 55.118"
WSP 1350/1	5.906" x 53.150"	7.874" x 55.118"
WSP 1350/2	7.874" x 53.150"	9.843" x 55.118"
WSP 1350/3	9.843" x 53.150"	11.811" x 55.118"
WSP 1350/4	11.811" x 53.150"	13.780" x 55.118"
WSP 1350/5	13.780" x 53.150"	15.748" x 55.118"
WSP 1350/6	15.748" x 53.150"	17.717" x 55.118"
WSP 1350/7	17.717" x 53.150"	19.685" x 55.118"
WSP 1350/8	19.685" x 53.150"	21.654" x 55.118"

WSP 1500 Series

Model no.	Max. space for ducting	Max. size wall opening
WSP 1500	3.937" x 59.055"	5.906" x 61.024"
WSP 1500/1	5.906" x 59.055"	7.874" x 61.024"
WSP 1500/2	7.874" x 59.055"	9.843" x 61.024"
WSP 1500/3	9.843" x 59.055"	11.811" x 61.024"
WSP 1500/4	11.811" x 59.055"	13.780" x 61.024"
WSP 1500/5	13.780" x 59.055"	15.748" x 61.024"
WSP 1500/6	15.748" x 59.055"	17.717" x 61.024"
WSP 1500/7	17.717" x 59.055"	19.685" x 61.024"
WSP 1500/8	19.685" x 59.055"	21.654" x 61.024"

Available standard in hot dip galvanized only.

NOFIRNO® water-repellent sealing compound

NOFIRNO is a water-repellent sealing compound based on a single-compound silicone material. In developing NOFIRNO, high priority was focused on its power of adhesion to subsurfaces as occurring in the construction sector and to cable sheathing and metal and plastic pipes. Special attention was given to the permanent flexibility of the sealing compound in order to permit minor settlements and movements of the cable/pipe bunch after the compound has set. This ensures that the seal remains intact in the long term in spite of mechanical loading. NOFIRNO sealing compound has a very short setting time. The top layer is rapidly tack-free.

NOFIRNO contains no halogens, formaldehyde, phenol, asbestos or other fibers. NOFIRNO is classified as non-toxic.

NOFIRNO is supplied in 310 ml cylinders. Before applying, make sure the subsurface is dry and dust-free. Any rust and grease must be removed. During application of NOFIRNO, the working area should be well ventilated. Application and safety procedures are described in Safety Data Sheet No. 73750/1.

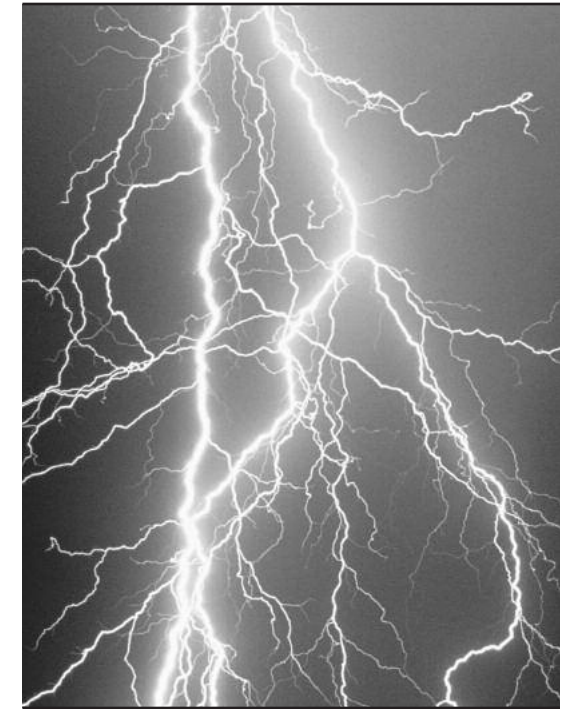
For product and sales information contact:

Dorn Equipment Corporation
 27 Upham Street • Melrose, MA 02176
 Tel: 781-662-0326 • Fax: 781-665-0180

WSP
WEATHERSTOP PENETRATIONS
 Weatherstop Units for Multi-Cable and Cable-Tray Penetrations

NOFIRNO is a trademark of Beele Engineering BV.

STEP-BY-STEP INSTALLATION INSTRUCTIONS
WSP Weatherstop Units for Multi-Cable Penetrations

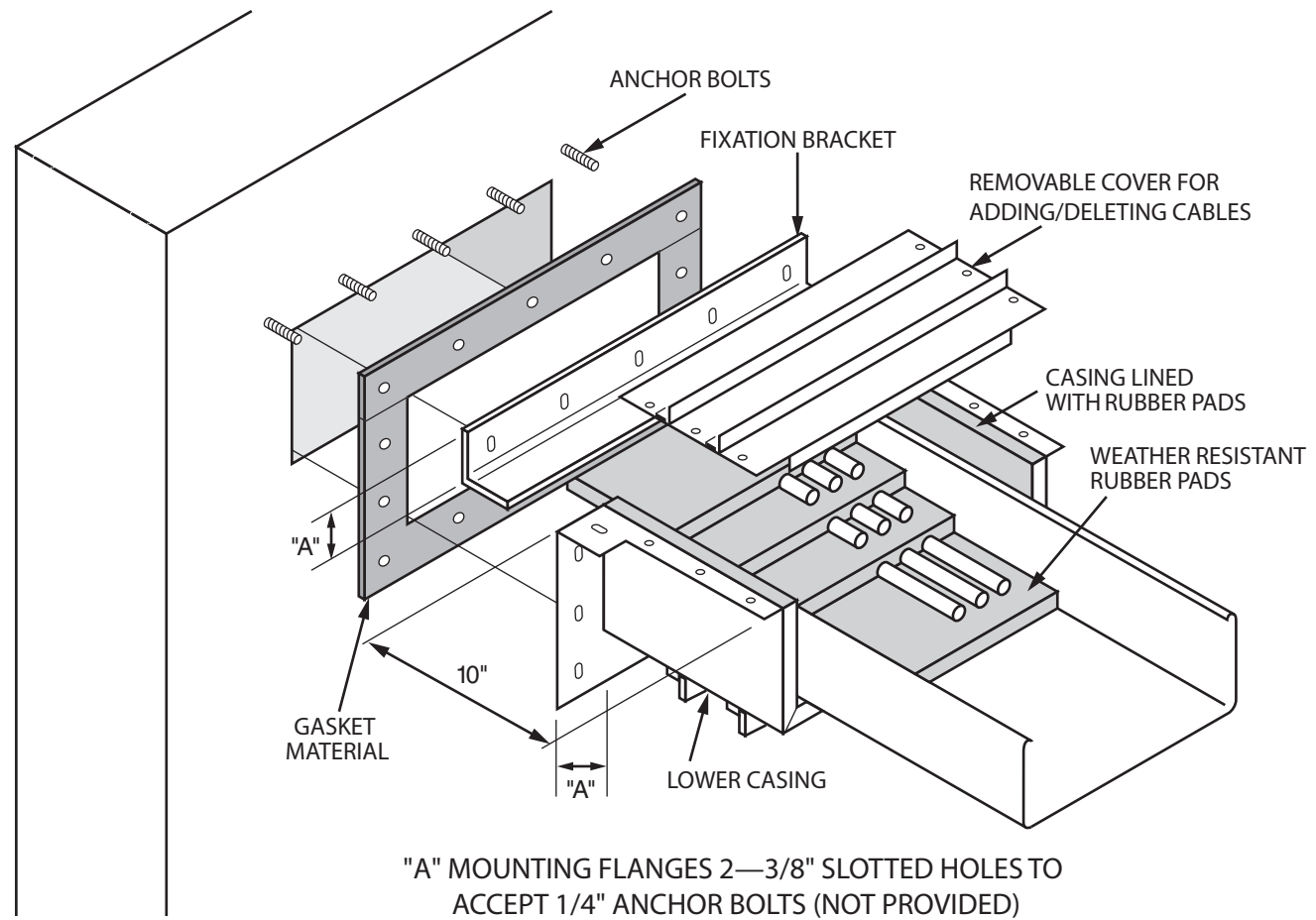


Tools required for installation:

- 1/4" anchor bolts
- power drill and bit
- 7/16" socket, wrench
- standard caulking gun

WSP
WEATHERSTOP PENETRATIONS

Typical WSP Weatherstop Unit



M

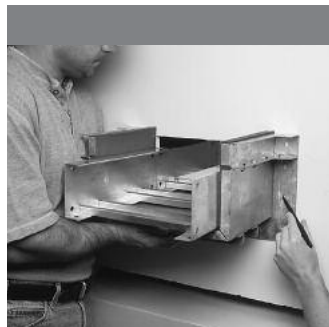
INSTALLATION INSTRUCTIONS



Step 1
Remove the top cover and fixation bracket from the WSP unit.



Step 2
Remove the horizontal layers of insert material. Leave the vertical side layers and the bottom horizontal layer in the WSP unit.



Step 3
Using the lower casing as a template, mark the location where the holes for the anchor bolts will be drilled.
Drill the mounting holes for the lower casing and install the anchor bolts. Place the lower casing over the installed anchor bolts and attach to the wall. Be careful not to tighten or strip the anchor bolts! You must remove the unit in step 5 to install gaskets.



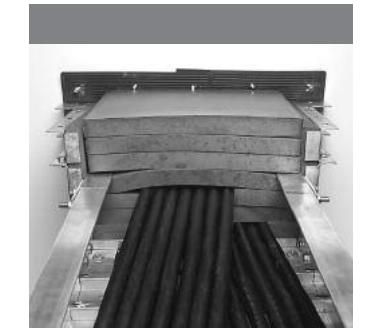
Step 4
Position the top fixation bracket and mark the location for fixation bracket mounting holes. Drill holes and install the anchor bolts for the fixation bracket.
Once all the mounting holes are located and the anchor bolts are installed, remove the unit from the wall.



Step 5
Place the appropriate gasket material over all of the anchor bolts.



Step 6
Fit the lower casing over the gaskets and anchor bolts and attach to the wall.
Fit the fixation bracket over the gaskets and anchor bolts and attach to the lower casing of the unit. Do not tighten completely so that the insert material may be easily installed in step 7.



Step 7
With a utility knife, cut the insert material to fit in and around the cable and cable tray. This should be packed tightly to a snug fit to ensure proper damming for the NOFIRNO® sealant. Place the remaining insert material in the unit and fit in place. Be sure to check under the cable tray for voids. Pack the insert material to fill any remaining voids.



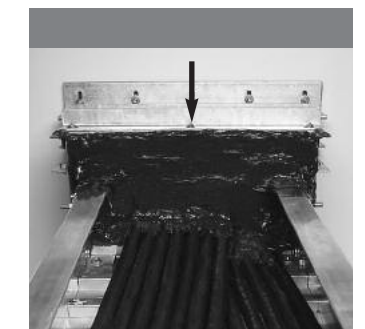
Step 8
Position the top cover and fixation bracket in place and secure to the lower casing and wall.



Step 9
Using the NOFIRNO® sealant supplied with the WSP unit, carefully and thoroughly seal the perimeter of the unit: 1) where metal meets the insert material, 2) all seams, and 3) in and around the cables and cable trays.



Step 10
Apply a thorough coat of NOFIRNO® to the face of the WSP unit in and around the cable tray and cables.



Step 11
Place a bead of NOFIRNO® where the cover plate meets the fixation bracket. Overlap the front of the cover plate, sides and bottom of the WSP unit by spreading the NOFIRNO® roughly 2 inches from the point where the insert material meets the metal frame. Overlap the cables and cable tray 2 inches away from the face of the WSP unit.



Accessories
Optional stainless weather shields are available for added protection.



Typical application
Typical application where large 4 inch diameter cables or pipes are passed through the WSP unit. Please note that the insert material has been cut and packed between large diameters to ensure proper sealing and damming.

